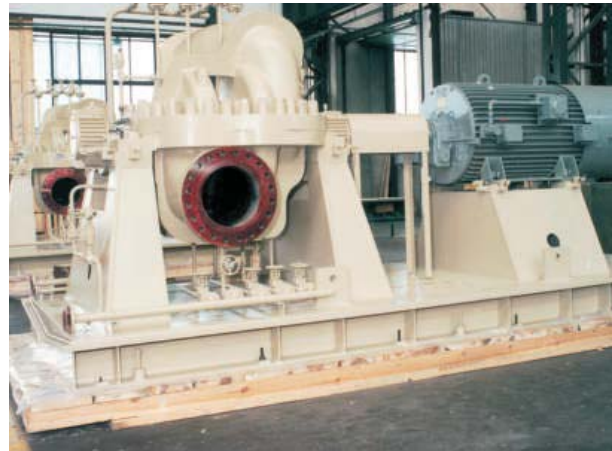
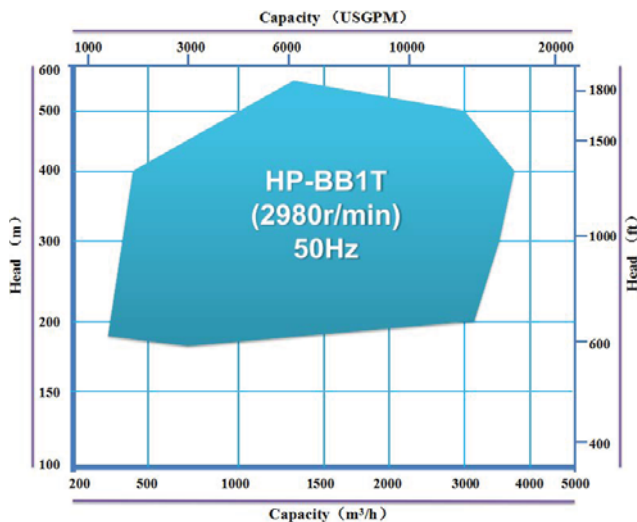


Operating Data

Standard: API610–2010 (ISO 13709)
 Capacity: 300 to 3600 m³/h
 Head: up to 500m
 Pressure: up to 110bar
 Temperature: – 40°C to +180°C

Typical Applications

The BB1T pump is typical for clean or with solid particles fluids, neutral or corrosive fluids. The pump's mainly applications are industrial processes, pipeline booster, medium or short distance water supply and other water fields.



General

The BB1T is a horizontal, two-stage, axial split, both-end mounted centrifugal pump comply with the requirements of API 610 and ISO 13709. It is designed for heavy duty applications. The pump with simple structure and extremely high reliability is easy to maintain.

The whole pump core (core package) can be replaced within 4 hours. And all the maintenance and replacement parts can be done without removing inlet and outlet pipes and motor. The internal inspection and overhaul only need to do every 4 years.

The BB1T is a new generation heavy-duty process pump with its unique energy-saving, reliability for high temperature and high pressure application and can be widely used in various industries.