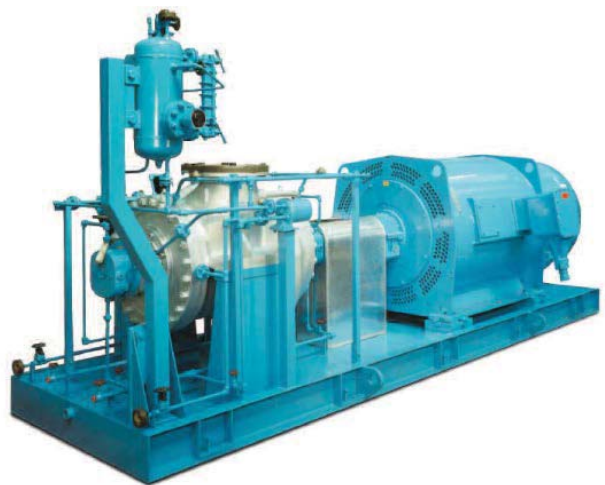
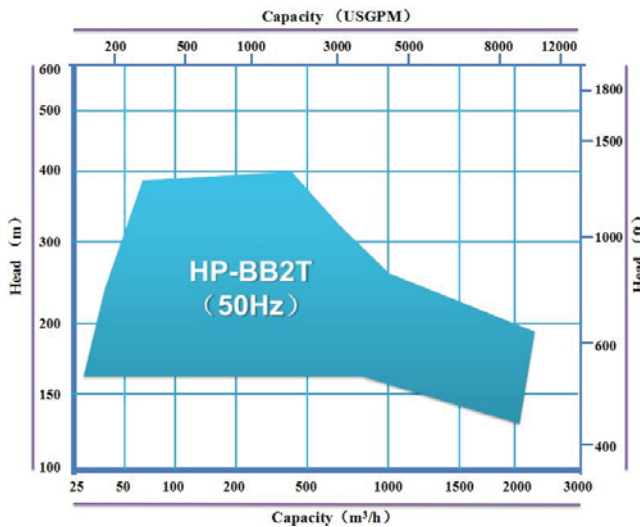


Operating Data

Standard: API610–2010(ISO 13709)
 Capacity: 18 to 2500 m³/h
 Head: up to 450m
 Pressure: up to 50bar
 Temperature: – 80°C to +450°C



General

The BB2T is in full compliance with API610, 10th edition (ISO 13709). For high pressure applications, these pump types are designed as between bearings, horizontal two-stage, and have a radial split case construction. Centerline mounting is utilized to minimize thermally induced misalignment. Fully confined gaskets are furnished as required by API 610. Suction and discharge nozzles are furnished in accordance with ANSI or DIN Standards and are configured in the top/top orientation.

Typical Applications

The BB2T applications range from light hydrocarbons at low temperatures, to corrosive fluids, coker furnace charge, vacuum bottoms and other services at high temperatures.

- Refineries
- Petrochemical plants
- Gas processing
- Coal processing
- Offshore installation

A variety of hydraulics is available in each size to suit particular applications.