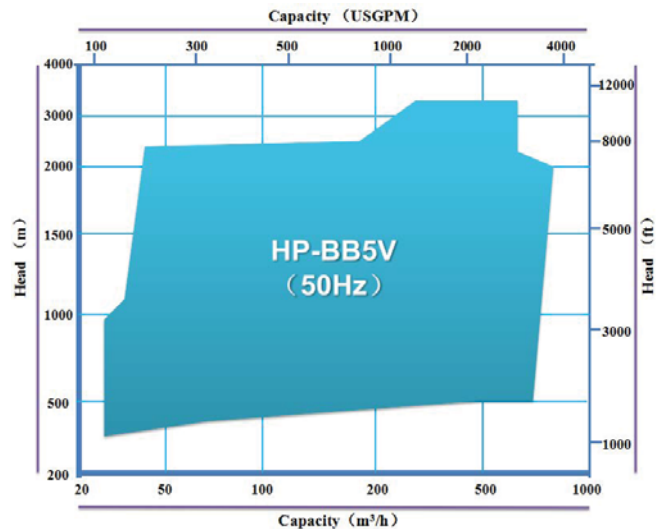
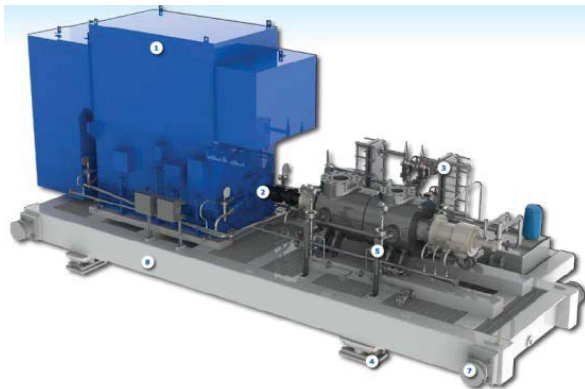


Operating Data

Standard:	API610–2010 (ISO 13709)
Capacity:	40 to 800m ³ /h
Head:	up to 4000m
Pressure:	up to 420bar
Temperature:	– 80°C to +450°C

Typical Applications

The BB5V pump is suitable for petroleum, refined oil, liquefied petroleum gas, light hydrocarbons, clean or flammable and explosive, toxic fluids. The BB5V pump typically can be used as hydrogenation feed pump and radiation feed pump of refinery, phosphorus removal pump and decoking pump of steel mill. The BB5V pump also can be used as water injection pump in oilfield and feed water pump of high pressure boiler.



General

The BB5V is a heavy duty, double casing, axially split of inner pump casing, centrifugal pump with both-end mounted, comply with the requirements of API610 and ISO13709. It is also a horizontal, multistage barrel pump. The impeller adopts a symmetrical and double-supported arrangement and this design is suitable for high temperature, high pressure and high speed operation.

The BB5V has a particular self-balancing structure. Without the extra balance system like general multistage centrifugal pump, the BB5V is more safety and more reliable when pumping fluids with solid particles.

The whole pump core (core package) can be replaced within 8 hours. And all the maintenance and replacement parts can be done without removing inlet and outlet pipes and motor.